

1

# WI SVPS – RESIDENCY RESTRICTIONS, COMMUNITY NOTIFICATION, & OUTCOMES

WI-ATSA • June 2, 2016  
Jason Cram, MPA & Gina Ambroziak, BS

## Overview

2

PART I	PART II
<ul style="list-style-type: none"><li>□ Putting it all into perspective<ul style="list-style-type: none"><li>▣ Process Overview</li><li>▣ Statutory Criteria</li></ul></li><li>□ SR Plan Components</li><li>□ Changing Landscape<ul style="list-style-type: none"><li>□ Economic Perspective</li><li>□ Statutory Changes</li></ul></li><li>□ Community Notification</li><li>□ Moving Forward</li></ul>	<ul style="list-style-type: none"><li>□ Historical snapshot</li><li>□ Sample Description</li><li>□ Outcomes<ul style="list-style-type: none"><li>▣ Descriptive</li><li>▣ Survival Analysis</li><li>▣ Discharge Post-SR</li></ul></li><li>□ Conclusions</li></ul>

3 **Part I**

- Putting it all into perspective
- SR Plan Components
- Changing Landscape
- Community Notification
- Moving Forward

**Putting it all into Perspective**  
A Brief Overview of Supervised Release

4

- **Crime**
  - **Conviction**
    - **Incarceration**
      - **Commitment**
        - **Supervised Release**
          - **Discharge**

## Putting it all into Perspective

### A Brief Overview of Supervised Release

5

- Statutory Requirements for SR (summarized)
  - Is making significant progress in treatment
    - Meaningful participation
    - Identify treatment needs
    - Understanding of factors linked to sexual offending
    - Sustained changes
  - Substantially probable he will not engage in an act of sexual violence while on SR
  - Treatment is available
  - Reasonably expected to comply with rules
  - Resources are available

## SR Plan Components

6

- Cover letter
  - County report summary
  - Law Enforcement report summary
- SR Plan
  - Supervision
  - Counseling and Treatment
  - Support Services and Monitoring
  - Medications and Health Care
  - Residence
  - Vocational and Employment
  - AODA
  - Financial Management
  - Pharmacological Treatment
  - Compliance and Cooperation
  - Law Enforcement Notification
- Rules

## Time – Order for SR Plan to Placement

7

□ Range = 36 to 596 days

□ Average = 190 days

□ Median = 164 days

Time	Count	%
< 90 days	4	4.2%
90 to < 180 days	49	51.0%
180 to < 270 days	25	26.0%
270 to < 365 days	12	12.5%
365+ days	6	6.3%
TOTAL	96	100.0%

## Changing Landscape

### An Economic Perspective

8

- Market Saturation
  - ADP and Awaiting Placement
- Capacity Building not Keeping up with Demand
- Supply Side
  - Changes in the Science of Assessing Risk
  - Aging of the Committed Population
  - Increased use of Stipulated Agreements
- Demand Side
  - Improving Economy and Housing Market
  - Monopoly / Oligopoly
  - Volatile and High Risk Investment
- Regulation
  - Audit
  - Political Involvement / Attention
  - Citizen Involvement

## Statutory Changes

9

- §980.08 4(e) – Courts ordering county departments under 51.42 to prepare a residence option report – has always been in statute
- 2015 Wisconsin Act 156
  - Law Enforcement Report
  - Minimum Setbacks from Key Locations
  - Adult at Risk Considerations
  - Serious Child Sex Offender Considerations
  - Good Cause for Out of County Orders (current ones in limbo)
  - Preempting Local Ordinances

## Considerations of 2015 WI Act 156

10

- Serious Child Sex Offender Definition
  - 1987 WI Act 332 (renumbering of criminal code)
  - Impact to List of Awaiting Placements
- Adjacent Property Definition
  - Use of County GIS Data
- County Reporting and Results
  - City of Milwaukee and Green County Approaches
- LE Report
  - No Template
  - Sensitive Data
  - Not a DHS Record

## Community Notification

11

- Plan Order
  - Residence Identification
    - Plan Submission
      - Plan Approval
        - Special Bulletin Notification
          - Core Team Meeting
            - Notification
              - Placement

## Community Notification

12

- Community Notification Meetings
  - Occurs in approximately 75% of SR Placements
  - §301.46 – Community Notification is a LE Process
  - Provides an Opportunity to Communicate Accurate Information to a Large Audience
  - Provides an Opportunity for Citizens to ask Questions
  - Requires LE to Set the Tone and Follow Best Practices
  - Usually Goes Well, Can Go Horribly Wrong

## Where To From Here

13

- Despite all of the Current Challenges, we are Saving Taxpayer Dollars
  - As Compared to SRSTC Inpatient Costs
  - As Compared to Previous Average Annual Costs
  - As Compared to Discharge Re-offense Rates
- Likely Additional Statutory Language Changes
- SR RFB for Comprehensive Services
  - Case Management
  - Monitoring, Chaperoning, Scheduling
  - Supported Living
  - Third Party Payment

## Where To From Here

14

- DHS Reorganization
- Housing Vendor Bid
- Housing Models
  - Public Venture
  - Public/Private Partnerships
  - Transitional Living (Requires Statutory Changes)

15 Questions?

16 Part II

- Historical Snapshot
- Sample Description
- Outcomes
- Conclusions

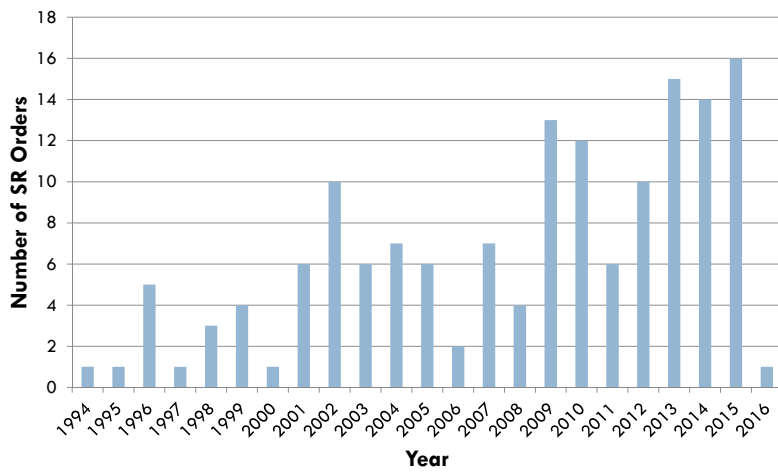


17

## Historical Snapshot

## Court Orders for SR over time

18



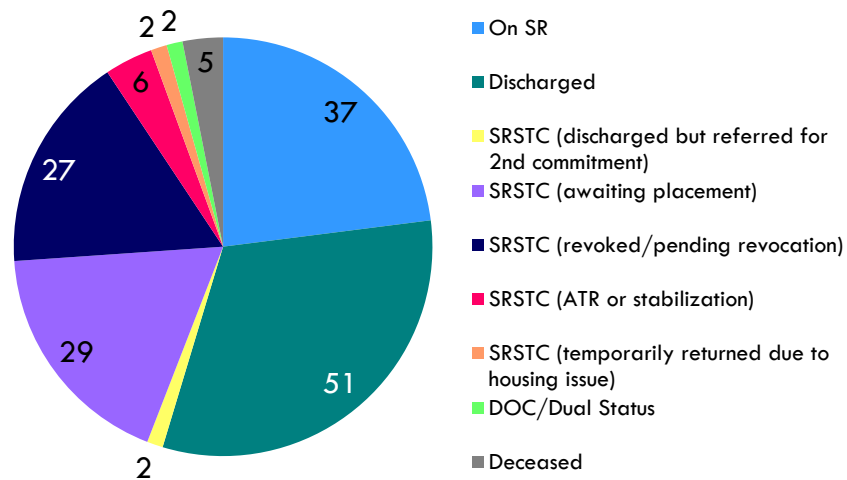
## SR vs. Total Commitments

19

- 538 patients historically committed
- 133 patients historically placed on SR
  - ▣ 24.7% of committed patients placed on SR
  - ▣ + 27 pending cases (court order for SR plan)
    - => 29.7% of committed patients

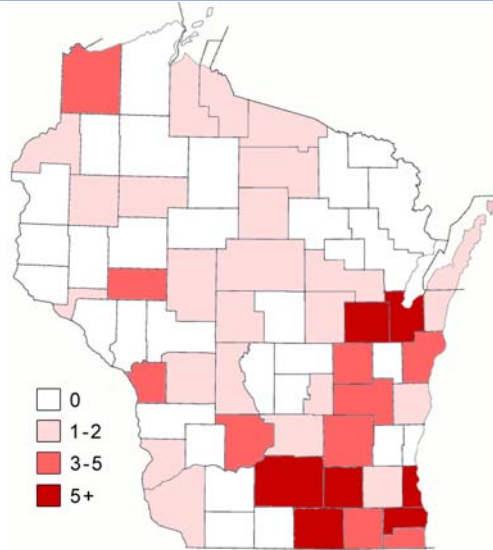
## Current Status of Historical SR Patients

20



## Patients Placed by County

21



## Placement Types

22

- Private Residence
  - ▣ 115 clients (86.5%)
- Halfway House or Group Home
  - ▣ 13 clients (9.8%)
- Assisted Living / Nursing Home
  - ▣ 1 client (0.8%)

23

## Sample Description

Time – admission to 1<sup>st</sup> SR placement

24

<b>Time</b>	<b>Count</b>	<b>%</b>
< 1 year	4	3.0%
1 to < 5 years	34	25.6%
5 to < 10 years	44	33.1%
10 to < 15 years	32	24.1%
15 or more years	19	14.3%
<i>Total</i>	<i>133</i>	<i>100.0%</i>

## Time – total since last community

25

Time	Count	%
1 to < 5 years	13	9.8%
5 to < 10 years	33	24.8%
10 to < 15 years	28	21.1%
15 or more years	59	44.4%
<i>Total</i>	<i>133</i>	<i>100.0%</i>

## Total Time on SR (in months)

26

- Min = <1 month
- Max = 203 months
- Average = 32 months
- Median = 24 months
- ≥ 12 months
  - ▣ 101 of 133 (75.9%)

Periods	Count	%
1	105	78.9%
2	21	15.8%
3	6	4.5%
4	1	0.8%
<i>Total</i>	<i>133</i>	<i>100.0%</i>

Total Time on SR	Count	%
0 to 3 months	9	6.8%
>3 to 6 months	6	4.5%
>6 to 12 months	21	15.8%
>12 to 24 months	32	24.1%
>24 months to 36 months	26	19.5%
>36 months	39	29.3%
<i>Total</i>	<i>133</i>	<i>100.0%</i>

## Conclusions re: SR & Discharge

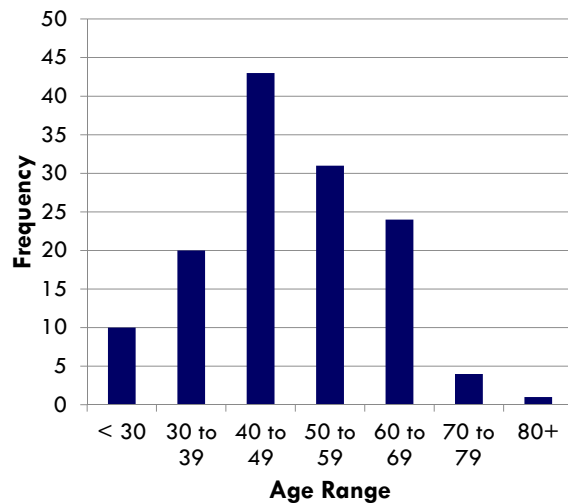
27

1st placements	Yes		No		Total	Conclusions	Count	%
	Count	%	Count	%				
Conclusion								
Meets SR	82	63.6%	47	36.4%	129	Neither	18	14.0%
Meets Discharge	63	48.8%	66	51.2%	129	SR Only	48	37.2%
						Discharge Only	29	22.5%
						Both	34	26.4%
						TOTAL	129	100.0%

## Age at Release (1<sup>st</sup> placement)

28

- Youngest = 24
- Oldest = 82
- Average = 48.6
- 9 juvenile-only offenders



## Demographics

29

Race/Ethnicity	Count	%	Marital Status	Count	%
African American/Black	17	12.8%	Married	11	8.3%
Asian or Pacific Islander	0	0.0%	Divorced	43	32.3%
Bi-racial	0	0.0%	Legally separated	2	1.5%
Caucasian/White	107	80.5%	Single	70	52.6%
Hispanic origin	3	2.3%	Widowed	1	0.8%
Native American	6	4.5%	Missing	6	4.5%
<b>TOTAL</b>	<b>133</b>	<b>100.0%</b>	<b>TOTAL</b>	<b>133</b>	<b>100.0%</b>

## Treatment Track

30

Track	Count	% of Historical SR	% of Current Inpatient
Pre-Treatment	5	3.8%	13.3%
ACT (↑PCL-R + Cognitive Deficits/MMI)	11	8.3%	21.9%
CT (↑ PCL-R + Average Cognitive Function)	42	31.6%	26.7%
Conventional (↓ PCL-R + Average Cognitive Function)	34	25.6%	20.8%
COMPASS (↓PCL-R + Cognitive Deficits/MMI)	28	21.1%	17.2%
Missing	13	9.8%	0.0%
<b>TOTAL</b>	<b>133</b>	<b>100.0%</b>	

# Diagnoses

31

- N = 131
- Pedophilic Disorder – 53.4%
- Sexual Sadism Disorder – 6.1%
- OSPD: Non-Consent & Hebephilic – 34.4%
- Other Paraphilic Disorders – 17.6%
- **ANY Paraphilic Disorder – 84.7%**
- Alcohol Use Disorders – 43.5%
- Other Substance Use Disorders – 23.7%
- Major Mental Illness – 3.1%
- Antisocial Personality Disorder – 42.0%
- Other Personality Disorder – 31.3%
- **ANY PD – 71%**

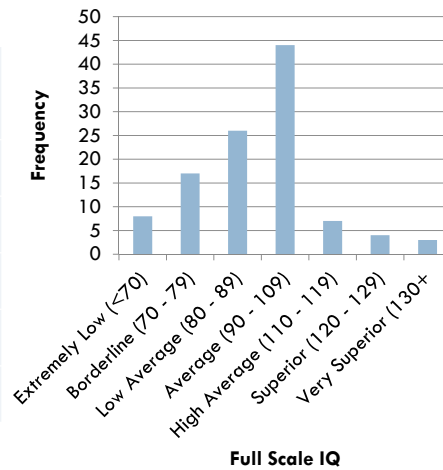
Profile	Count	%
Neither	1	0.8%
Paraphilic Only	37	28.2%
PD Only	19	14.5%
Both	74	56.5%
<b>TOTAL</b>	<b>131</b>	<b>100.0%</b>

# IQ

32

- N = 109

Scale	Min	Max	Average
FSIQ	54	133	91.2
VCI	59	140	91.3
POI/PRI	64	138	97.3
WMI	57	128	89.2
PSI	57	131	91.7

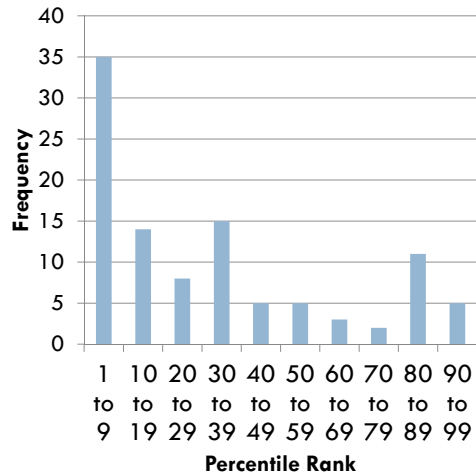




## Executive Functioning – Category Test

33

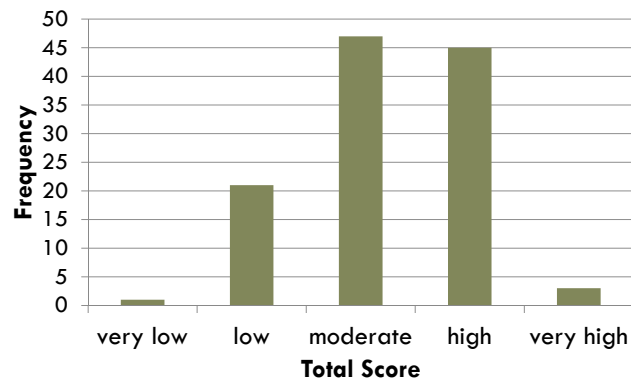
- N = 107
- 34% fell below the 10<sup>th</sup> percentile normed to age/education
- 59.8% deficient performance based on raw number of errors



## PCL-R

34

- N = 117  
(n = 112 at the Facet/Factor level)

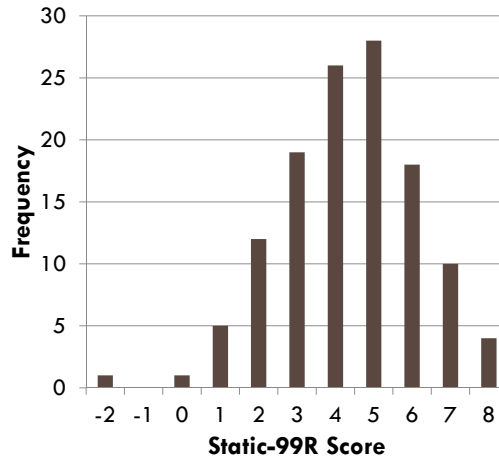


Facet 1	Facet 2	Facet 3	Facet 4	Factor 1	Factor 2	Total
4.3	5.2	5.4	5.5	9.5	10.8	22.3

## Static-99R

35

- N = 124
- Recall
  - ▣ 133 patients
  - ▣ 151 placements
  - ▣ 9 missing  
(e.g., juvenile-only)
- Range = -2 to 8
- Average = 4.34



## Structured Risk Assessment-Forensic Version (SRA-FV) Domains & Total Need Score

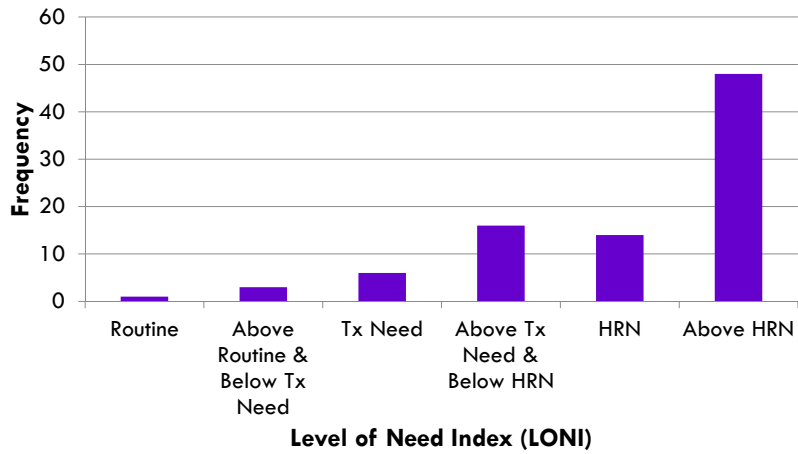
36

- N = 88

Domain Average	Min	Max	Average
Sexual Interests	0.00	2.00	1.14
Relational Style	0.38	2.00	1.22
Self-Management	0.53	1.80	1.26
<b>TOTAL NEED SCORE</b>	<b>1.67</b>	<b>4.88</b>	<b>3.61</b>

## SRA-FV - LONI

37



## SRA-FV – Sexual Interests Domain

38

Sexual Interests Domain	Score of 2	
Factor	Count	%
Sexual Interest in Children	46	52.3%
Sexualized Violence	21	23.9%
Sexual Preoccupation (Rule-Based)	33	37.5%
Sexual Preoccupation (Concept-Based)	52	59.1%

## SRA-FV – Relational Style Domain

39

Relational Style Domain	Score of 2		Average
	Count	%	
<i>Factor</i>			
LEIRA	67	76.1%	
Emotional Congruence with Children	12	13.6%	
Callousness (PCL-R Facet 2)			1.34
Internal Grievance Thinking	44	50.0%	
Poorly-Managed Anger	29	33.0%	

## SRA-FV – Self-Management Domain

40

Self-Management Domain	Score of 2		Average
	Count	%	
<i>Factor</i>			
Lifestyle Impulsivity (PCL-R Facet 3)			1.07
Resistance to Rules & Supervision (PCL-R Facet 4)			1.11
Dysfunctional Coping	56	63.6%	

41 Outcomes

- Overall / Descriptive
- Survival Analysis
- Post-SR (Discharge)

42 Descriptive Outcomes

## Adaptation to SR

43

- Adequate adaptation and still on SR
  - ▣ 34 (25.6%)
- Adequate adaptation to SR and subsequently discharged
  - ▣ 37 (27.8%)
- At least 1 period of custody for revocation, ATR, or stabilization
  - ▣ 62 (46.6%)

## Subsequent Adaptations

44

- Recall:
  - ▣ 21 with 2 discrete time periods on SR (28 with 2+)
    - 16 of 28 with custody event (57.1%)
    - 12 of 28 censored/successful adaptation (42.9%)
  - ▣ 6 with 3 discrete time periods on SR (7 with 3+)
    - 5 of 7 with custody event (71.4%)
    - 2 of 7 censored/successful adaptation (28.6%)
  - ▣ 1 with 4 discrete time periods on SR
    - 1 of 1 with custody event

## Violations / Reasons for Custody

45

- Need not be a formal revocation - includes alternatives to revocation (ATR) and custody >1 week
  - 1<sup>st</sup> custody: 69.4% revocation/pending petition for revocation and 30.6% ATR/less formal periods of custody
- 25 reasons
- Sexual offense-related
  - Mutually exclusive within this category
    - Sex offense (arrest, charge, conviction)
    - Uncharged illegal sexual behavior
    - Imminent risk for sex offense
    - Created potential grooming opportunity
    - Offense-related interest activated; no imminent risk
- Non-sexual offenses and other violations
  - Can code multiple; most had >1 violation type

## Reasons for Custody: Sex Offense-Related

46

Violation	# of patients ever to have violation	% # with violation # with custody event N = 62	% # with violation total # patients placed N = 133
Sexual Offense including arrests, charges, convictions	3	4.8%	2.3%
Illegal sexual behavior (uncharged)	7	11.3%	5.3%
Engaged in behavior which puts patient at <u>imminent</u> risk for sexual re-offense	5	8.1%	3.8%
Offense-related interests apparently activated with no imminent risk	20	32.3%	15.0%
Engaged in behavior which creates opportunity for grooming of victims or victim-protectors	5	8.1%	3.8%
Illegal sexual behavior occurred with animals (uncharged)	1	1.6%	0.8%

## Reasons for Custody: Non-Sexual Offenses

47

Violation	# of patients ever to have violation	% # with violation # with custody event N = 62	% # with violation total # patients placed N = 133
Non-sexual Violent Offense including arrests, charges, convictions	2	3.2%	1.5%
Other Criminal Offense including arrests, charges, convictions	4	6.5%	3.0%
Absconding/Escape/Leaving the State including official arrests, charges, convictions and discussing intent to do so	6	9.7%	4.5%

## Reasons for Custody: Unapproved Contact/Activity/Items

48

Violation	# of patients ever to have violation	% # with violation # with custody event N = 62	% # with violation total # patients placed N = 133
Unapproved contact/activity	34	54.8%	25.6%
Weapons	6	9.7%	4.5%
Alcohol, tobacco, controlled substances, unapproved medications (possession/consumption of or giving prescribed meds to others)	14	22.6%	10.5%
Technology – internet, computer, cell phone, cable, gaming system	22	35.5%	16.5%
Sexually explicit but LEGAL materials	18	29.0%	13.5%
Other (e.g., vehicle)	4	6.5%	3.0%



## Reasons for Custody: Interpersonal/Treatment

49

Violation	# of patients ever to have violation	% # with violation # with custody event N = 62	% # with violation total # patients placed N = 133
Unapproved intimate relationship or unapproved, but legal sexual contact (including solicitation /attempts to establish)	19	30.6%	14.3%
Inadequate Participation in SOT	11	17.7%	8.3%
Expressing threats/intent/thoughts of harming) self/others; aggressive or threatening behavior	7	11.3%	5.3%
Psychiatric instability or medical decompensation	2	3.2%	1.5%
Boundary violations/inappropriate behavior or comments to staff or monitors; fraternization	10	16.1%	7.5%

## Reasons for Custody: Misc. Rule Violations

50

Violation	# of patients ever to have violation	% # with violation # with custody event N = 62	% # with violation total # patients placed N = 133
Not compliant with Electronic Monitoring	11	17.7%	8.3%
Lying, Providing Inaccurate Information, Failed Polygraphs	32	51.6%	24.1%
Miscellaneous Rule Violation of Halfway House/Supervising Staff (including argumentative, disruptive, or disrespectful behavior)	12	19.4%	9.0%
Financial Violations (including unapproved lending/borrowing of money, purchasing on credit)	21	33.9%	15.8%
Failure to comply with assessment, psychiatric, or medical procedures (including polygraph, PPG, urinalysis, refusal to take medications)	2	3.2%	1.5%

## Charged Sexual Offense – Case 1

51

- Forced sex on a 33-year-old woman whom he had known 15 years (her boyfriend was related to the client) – occurred at the client’s apartment
- 2<sup>nd</sup> Degree Sexual Assault/Use of Force (Dismissed on Prosecutor’s Motion)
- Resisting or Obstructing an Officer (Guilty/No Contest)
- 35 months into SR placement
- Age = 55 years old
- Static-99R = 4
- SRA-FV Total Need = 4.88
- PCL-R score = 31
- Diagnoses
  - ▣ History of Alcohol Abuse
  - ▣ ASPD
- Committed directly to SR

## Charged Sexual Offense – Case 2

52

- Initiated “dating” relationships with 16- and 17-year-old females at place of work; sexual contact at his residence
- Child Enticement – Expose Sex Organ (Dismissed/Read-in)
- Sex with Child Age 16 or Older (Guilty due to Guilty Plea)
- 3<sup>rd</sup> Degree Sexual Assault (Dismissed on Prosecutor’s Motion)
- Exposing Genitals to Child (Guilty due to Guilty Plea)
- 5 months into SR placement
- Age = 24 years old
- Static-99R = 7
- PCL-R = 28.9
- Diagnoses
  - ▣ ASPD
- Met criteria for SR but not Discharge

## Charged Sexual Offense – Case 3

53

- An adult daughter of the client, on an authorized visit at his home, awoke to him lying on top of her, holding her arms down, touching/kissing her, then tried to prevent her from leaving
- 2<sup>nd</sup> Degree Sexual Assault/Use of Force (Guilty due to Guilty Plea)
- False Imprisonment (Dismissed on Prosecutor's Motion)
- 13 months into SR placement
- Age = 52 years old
- Static-99R = 2
- SRA-FV Total Need = 2.40
- PCL-R = 28
- Diagnoses
  - Paraphilia NOS (features of pedophilia and hebephilia)
  - Cocaine Dependence
  - Alcohol Abuse
  - Personality Disorder NOS with antisocial features
- Met for Discharge but not SR

## Other Charged Offenses

54

- Case 1
  - Disorderly Conduct (Dismissed)
  - Domestic Abuse (Arrested only – uncharged)
  - Criminal Damage to Property (Arrested only – uncharged)
- Case 2
  - Obstructing an Officer (Guilty due to No Contest Plea)
  - Battery or Threat to Witnesses (Guilty due to Alford Plea)
- Case 3
  - Escape by Sexually Violent Offender under Commitment Order (Guilty due to No Contest Plea)
- Case 4
  - Fail/Maintain Sex Offender Registry (disposition pending)
  - Sex Offender - Use Different Name (disposition pending)
- Case 5
  - Escape by Sexually Violent Offender under Commitment Order (disposition pending)
  - Tampering with a Global Positioning System Tracking Device (disposition pending)

55

## Survival Analysis

## Survival Analysis

56

- Whether and when an event / “failure” occurs
  - ▣ Takes into account time and censored cases
- Defining an event
  - ▣ Any custody event (62)
  - ▣ Sex Offense-Related – broadly defined (32)
    - Offense related interests activated, grooming opportunities, plus serious sex offense-related (below)
  - ▣ Serious Sex Offense-Related – narrowly defined (13)
    - Charged, uncharged illegal sexual behavior, offense imminent
- Types of analysis
  - ▣ Life Tables
  - ▣ Kaplan-Meier
  - ▣ Cox Regression

## Survival Analysis (cont'd)

57

- 1<sup>st</sup> period only
- N = 124
- Excludes:
  - ▣ 1 outlier (client has a guardian; placed in a group home for ~ 203 months)
  - ▣ Clients without opportunity for at least 9 months on SR

## Survival Analysis Sample - Descriptives

58

- Excludes 9 cases
- N = 8 juvenile-only
- Static-99R = 4.24
  - ▣ 64.5% moderate-high or high
- PCL-R Total = 22.0
- FSIQ = 90.8
- Age at placement = 48.5
- Years from admission to placement = 8.8
- Conclusions
  - ▣ Neither = 15.0%
  - ▣ SR only = 37.5%
  - ▣ Discharge only = 23.3%
  - ▣ Both = 24.2%

## Any Custody Event – Life Tables

59

Time Interval (months)	Number Entering Interval	Number Withdrawing during Interval	Number Exposed to Risk	Number of Terminal Events	Proportion Terminating	Proportion Surviving	Cumulative Proportion Surviving at End of Interval
0 to 6	124	0	124.000	18	.15	.85	.85
6 to 12	106	10	101.000	10	.10	.90	.77
12 to 18	86	11	80.500	13	.16	.84	.65
18 to 24	62	5	59.500	5	.08	.92	.59
24 to 30	52	7	48.500	7	.14	.86	.51
30 to 36	38	7	34.500	2	.06	.94	.48
36 to 42	29	3	27.500	3	.11	.89	.42

## Any Custody Event – Kaplan-Meier

60

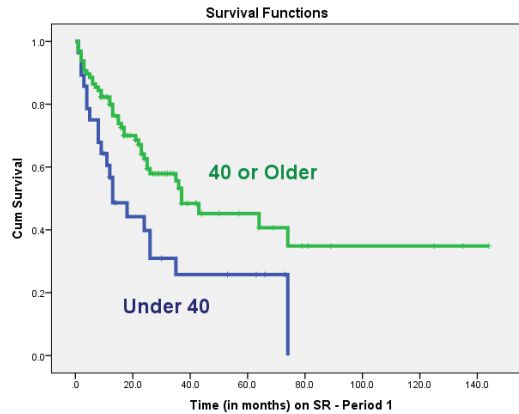
- Whether two or more survival curves are equivalent
  - Age at release
  - Release Cohort
  - Static-99R Risk Categories
  - Met criteria for SR and/or Discharge
  - SRA-FV Level of Need Index

## Any Custody Event – Kaplan-Meier Age

61

- Significantly different
- Number of Events
  - ▣ Under 40: 20 of 28
  - ▣ 40 or Older: 42 of 96

Time (in months)	Cumulative Proportion Surviving	
	Under 40	40 or Older
2	.893	.938
4	.786	.896
8	.679	.844
24	.398	.626

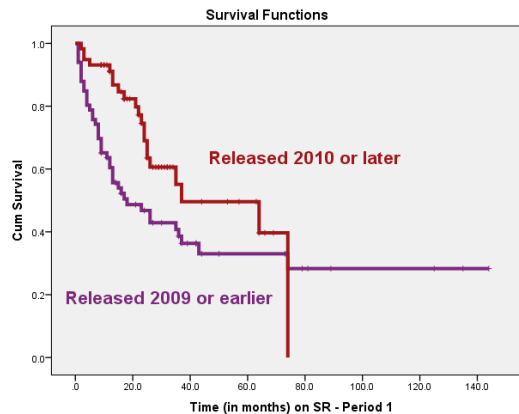


## Any Custody Event – Kaplan-Meier Release Cohort

62

- Significantly different
- Number of Events
  - ▣ ≤ 2009: 41 of 66
  - ▣ ≥ 2010: 21 of 58

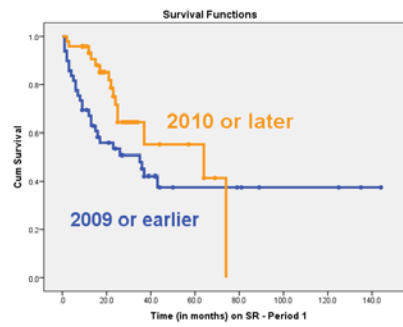
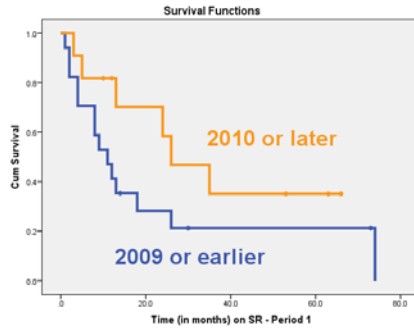
Time (months)	Cumulative Proportion Surviving	
	≤ 2009	≥ 2010
2	.879	.983
12	.604	.911
23	.468	.745
35	.408	.551



## Any Custody Event – Kaplan-Meier Age x Release Cohort

63

- Under 40
- Approaching significance
- 40 or Older
- Significantly different



## Any Custody Event – Kaplan-Meier Other

64

- Non-significant differences:
  - Static-99R Risk Categories
  - Met criteria for SR and/or Discharge
  - SRA-FV Level of Need Index



## Cox Regression

65

- Modeling survival time – explanatory variables as predictors
  - Age
  - Release Cohort
  - Static-99R
  - PCL-R
  - Met criteria for SR and/or Discharge
  - SRA-FV Total Need/Domains

## Any Custody Event – Cox Regression

66

Variables in the Equation								
	B	SE	Wald	df	Sig.	Exp(B)	95.0% CI for Exp(B)	
							Lower	Upper
Age	.680	.273	6.211	1	.013	1.973	1.156	3.368
Release Cohort	.620	.271	5.241	1	.022	1.859	1.093	3.160

- Hazard Ratios
  - Age
    - Hazard for young clients is 1.97 times that of older clients
  - Release Cohort
    - Hazard for clients released earlier is 1.86 times that of clients released recently

## Sex Offense-Related Event

67

- Number of events = 32 and includes:
  - Sexual Offense
  - Uncharged illegal sexual behavior
  - Engaged in behavior which puts patient at imminent risk for sexual re-offense
  - Offense-related interests apparently activated with no imminent risk
  - Engaged in behavior which creates opportunity for grooming of victims / victim-protectors

## Sex Offense-Related Event – Life Tables

68

Time Interval (months)	Number Entering Interval	Number Withdrawing during Interval	Number Exposed to Risk	Number of Terminal Events	Proportion Terminating	Proportion Surviving	Cumulative Proportion Surviving at End of Interval
0 to 6	124	10	119.000	8	.07	.93	.93
6 to 12	106	13	99.500	7	.07	.93	.87
12 to 18	86	17	77.500	7	.09	.91	.79
18 to 24	62	7	58.500	3	.05	.95	.75
24 to 30	52	11	46.500	3	.06	.94	.70
30 to 36	38	8	34.000	1	.03	.97	.68

## Sex Offense-Related Event – Kaplan-Meier

69

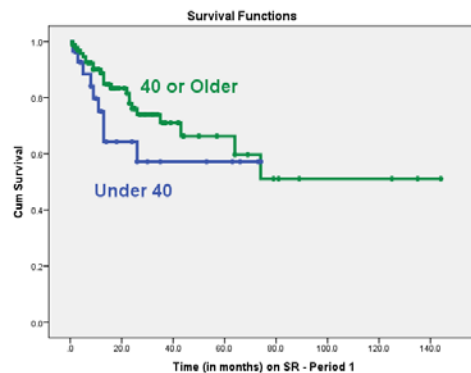
- Number of events = 32 and includes:
  - Sexual Offense
  - Uncharged illegal sexual behavior
  - Engaged in behavior which puts patient at imminent risk for sexual re-offense
  - Offense-related interests apparently activated with no imminent risk
  - Engaged in behavior which creates opportunity for grooming of victims / victim-protectors
- Age at release
- Release Cohort
- Static-99R Risk Categories
- Meets for SR and/or Discharge
- SRA-FV Level of Need Index

## Sex Offense-Related Event – Kaplan-Meier Age

70

- Non-significant
- Number of Events
  - Under 40: 9 of 28
  - 40 or Older: 23 of 96

Time (months)	Cumulative Proportion Surviving	
	Under 40	40 or Older
3	.926	.968
9	.797	.901
26	.572	.740

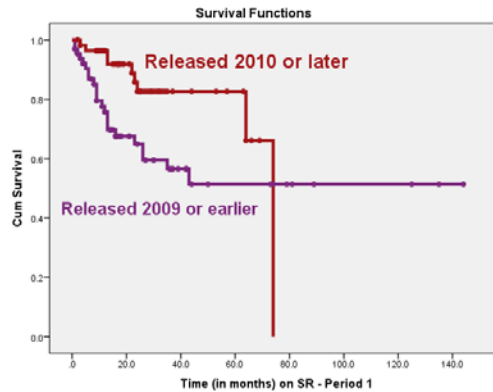


## Sex Offense-Related Event – Kaplan-Meier Release Cohort

71

- Significantly Different
- Number of Events
  - ≤ 2009: 23 of 66
  - ≥ 2010: 9 of 58

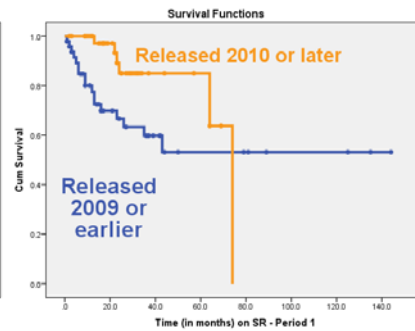
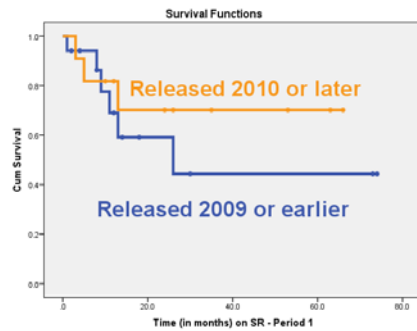
Time (months)	Cumulative Proportion Surviving	
	≤ 2009	≥ 2010
5	.903	.965
13	.697	.919
23	.650	.858



## Sex Offense-Related Event – Kaplan-Meier Age x Release Cohort

72

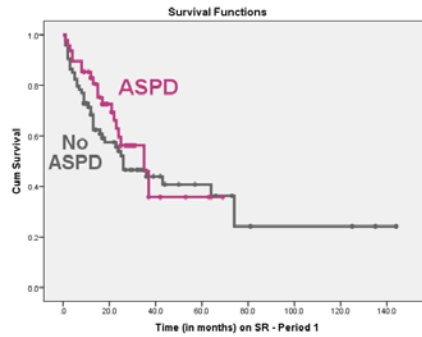
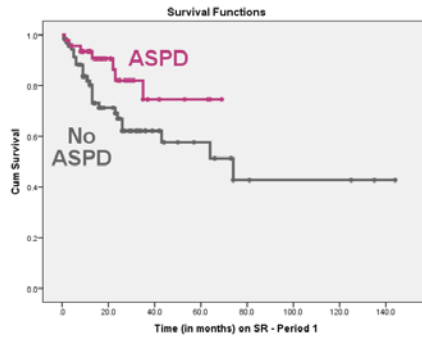
- Under 40
- Non-significant
- 40 or Older
- Significantly different



## Sex Offense-Related Event – Kaplan-Meier ASPD

73

- Significant
- Number of Events
  - ▣ With ASPD: 7 of 48
  - ▣ Without: 25 of 74
- But...
- ANY custody event
  - ▣ Non-significant



## Sex Offense-Related Event – Kaplan Meier Others

74

- Non-significant differences:
  - ▣ Static-99R Risk Categories
  - ▣ Met criteria for SR and/or Discharge
  - ▣ SRA-FV Level of Need Index

## Sex Offense-Related Event Cox Regression

75

	B	SE	Wald	df	Sig.	Exp(B)	95.0% CI for Exp(B)	
							Lower	Upper
Age	.467	.394	1.403	1	.236	1.595	.736	3.457
Release Cohort	.913	.396	5.320	1	.021	2.492	1.147	5.413

- Hazard Ratios
  - Age
    - Non-significant
  - Release Cohort
    - Hazard for clients released earlier is 2.49 times that of clients released recently

## Serious Sex Offense-Related Event

76

- Number of events = 13, and includes:
  - Sexual offense (3)
  - Uncharged illegal sexual behavior (6)
  - Engaged in behavior which puts patient at imminent risk for sexual offense (4)
- Note: in descriptive summary, 15 such events, but 2 occurred during the client's subsequent periods on SR

## Serious Sex Offense-Related Event Life Tables

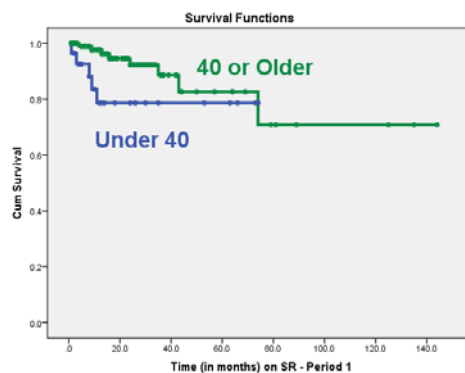
77

Time Interval (months)	Number Entering Interval	Number Withdrawing during Interval	Number Exposed to Risk	Number of Terminal Events	Proportion Terminating	Proportion Surviving	Cumulative Proportion Surviving at End of Interval
0 to 6	124	15	116.500	3	.03	.97	.97
6 to 12	106	16	98.000	4	.04	.96	.93
12 to 18	86	22	75.000	2	.03	.97	.91
18 to 24	62	10	57.000	0	0.00	1.00	.91
24 to 30	52	13	45.500	1	.02	.98	.89
30 to 36	38	8	34.000	1	.03	.97	.86

## Serious Sex Offense-Related Event Kaplan-Meier - Age

78

- Significantly different
- Number of Events
  - Under 40: 5 of 28
  - 40 or Older: 8 of 96
- Cumulative Proportion Surviving at 9 months
  - Under 40 = .835
  - 40 or Older = .989



## Serious Sex Offense-Related Event Kaplan-Meier - Others

79

- Non-significant
  - Release Cohort
  - Static-99R Risk Categories
  - Diagnoses
  - Met criteria for SR and/or Discharge
  - SRA-FV Level of Need Index

## Serious Sex Offense-Related Event Cox Regression

80

- No improved model fit when covariates were added



81

## Outcomes Post-SR

## Time on SR to Discharge

82

- N = 53
- Range
  - ▣ <1 mo – 144 months
- Average = 36
- Median = 30

Total Time on SR	Count	%
≤ 12 months	9	17.0%
>12 to 24 months	12	22.6%
>24 months to 36 months	11	20.8%
>36 months	21	39.6%
<i>Total</i>	53	100.0%

## Known Sexual Offenses SR Clients - Post-Discharge

83

- N = 53
  - ▣ 2 of which have been referred for subsequent commitment
- 9 clients (17%) with known charges for sexual offenses
- **Interpret with caution!**
  - ▣ Have not sorted out actual time free (at risk), carried out survival analysis, thoroughly searched out of state criminal records, etc.

84

## Conclusions

## Program

85

- Roughly 25% of historical commitments with at least some time on SR (closer to 30% when pending placements go through)
- Increasing number of court orders for SR
- Recent changes
  - ▣ Statutory criteria allowing for more placements
  - ▣ Transitional Living Unit
  - ▣ Re-Entry Curriculum
  - ▣ Continuity of Care Quality Improvement Project
- Challenges
  - ▣ Residency restrictions / public perceptions

## Sample

86

- Lengthy periods of institutionalization prior to placement
- Relatively high risk / need sample
  - ▣ 65% moderate-high or high Static-99 Risk Category
  - ▣ 70% HRN or above on SRA-FV
    - though missing data for ~30% of the sample
- 64% met statutory criteria for SR
- Most commonly released in age bands of 40s or 50s
- Majority had Paraphilic Disorders (85%) or Personality Disorders (71%), with slightly > 50% having both

## Outcomes – Violations

87

- What?
  - Sex offenses are very rare
    - When they did occur, they happened at the client's place of residence and the victims were known to the client
  - Custody for other types of violations are fairly common (47% with some custody event)
    - Most frequent violations
      - Unapproved contact/activity
      - Lying/providing inaccurate information
      - Offense-related interests apparently activated with no imminent risk
      - In possession of unapproved items (e.g., technology-related; legal, sexually explicit materials)
      - Financial violations

## Outcomes – Violations (cont'd)

88

- When?
  - Majority of events occur within the first year and a half regardless of violation type
    - Any custody event – 66%
    - Sex offense-related event – 69%
    - Serious sex offense-related event – 69%
  - Rare after three years on SR
    - Any custody event – 7 of 62
    - Sex offense-related event – 3 of 32
    - Serious sex offense-related event – 2 of 13

## Outcomes – Violations (cont'd)

89

- Who?
  - Hazard is higher for younger (under 40) compared to older (40+) clients
    - Though not significantly so for sex-offense related events
  - Hazard is lower for recently released (2010 or later) clients compared to those released earlier
    - Though not significantly so for serious sex offense-related events
    - Younger clients not showing as much improvement even in recent cohort (but no significant interaction in Cox Regression models)
  - No observed differences when comparing categories of other factors thought to be risk relevant (Static-99R, PCL-R, SRA-FV, whether the client meets criteria for SR/discharge, etc.)

## Implications

90

- Evaluating the current resources and making informed decisions on how to reallocate those resources to best meet the needs of the clients and community
- Overwhelming majority (92 to 98%) of clients can be safely (i.e., sex offense free) managed in the community in spite of high level of risk / need
- Structure, support, and supervision during the first year and half is likely to be crucial as this is when hazards for any kind of custody event are highest
- Devoting additional resources to younger clients may help to remediate higher hazard levels (=>RNR)
- Program is able to cope with those who didn't meet statutory criteria at least as well as those who did
- Custody event ≠ failure

## Limitations & Future Directions

91

- Relatively small sample
- Changing statutory criteria and program design over time makes comparison difficult
- Depending on sample characteristics and program design, results may have limited generalizability to other programs
- Most analyses limited to 1<sup>st</sup> placement
- Issue of competing risks when looking at anything other than all custody events together
  
- Recurrent event analysis
- Further investigation of patterns/pathways of those with serious sex offense-related events
- Thorough follow up of discharged cases
- Continual process of improvement and new initiatives to develop the program and make efficient use of resources

## Contact Information

92

- Jason Cram, SR Program Manager
  - [Jason.Cram@dhs.wisconsin.gov](mailto:Jason.Cram@dhs.wisconsin.gov)
  
- Gina Ambroziak, Research Analyst
  - [Gina.Ambroziak@dhs.wisconsin.gov](mailto:Gina.Ambroziak@dhs.wisconsin.gov)